



CCDS

CROP CONDITION AND DEVELOPMENT STAGES

SEPTEMBER 30, 2021



DEPARTAMENT & REGIONS

HEAD OF DEPARTMENT

Ing. Esteban J. Copati
ecopati@bc.org.ar

CROP ANALYST

Ing. Martin López
martinlopez@bc.org.ar

CROP ANALYST

Ing. Daniela A. Venturino
dventurino@bc.org.ar

CROP ANALYST

Ing. Andrés Paterniti
apaterniti@bc.org.ar

CROP SURVEY & ANALYSIS OF CROP CONDITION AND DEVELOPMENT STAGES

Justo Fernández Vidal
jfernandez@bc.org.ar

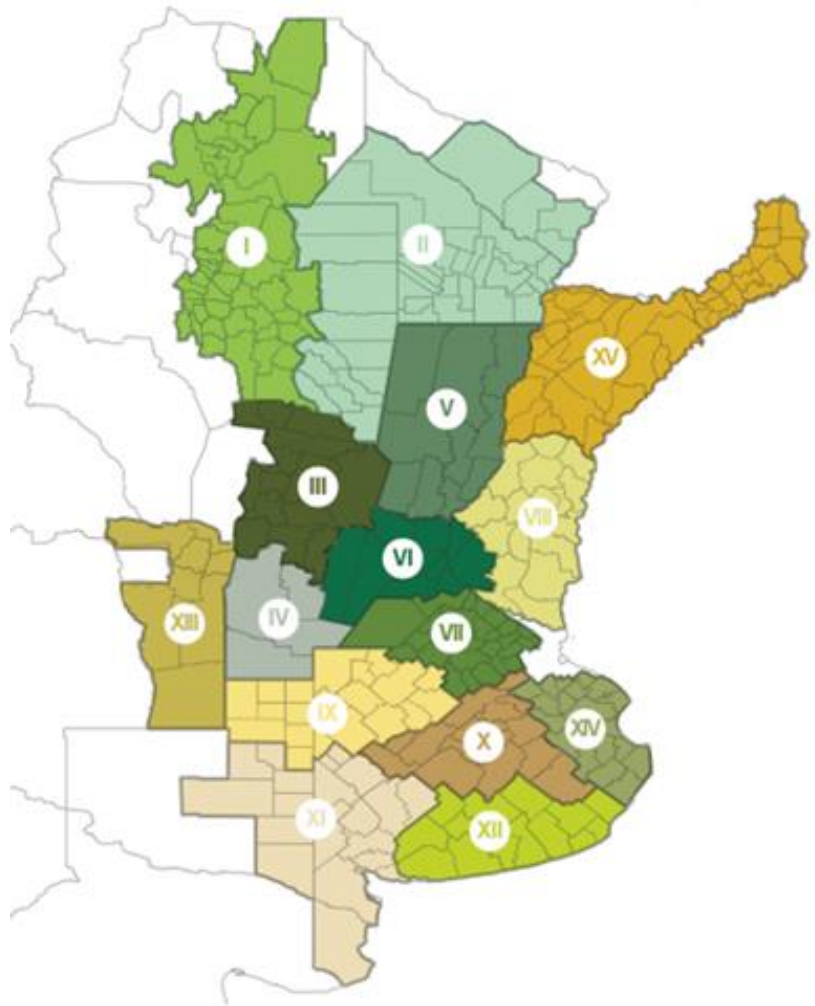
Jorgelina Mediate
jmediate@bc.org.ar

Florencia Rostagno
frostagno@bc.org.ar

CONTACT

Av. Corrientes 123
C1043AAB - CABA
Tel.: +54 11 4515 8200 | 8300
estimacionesagricolas@bc.org.ar
Twitter: @estimacionesbc

ISSN 2408-4344t

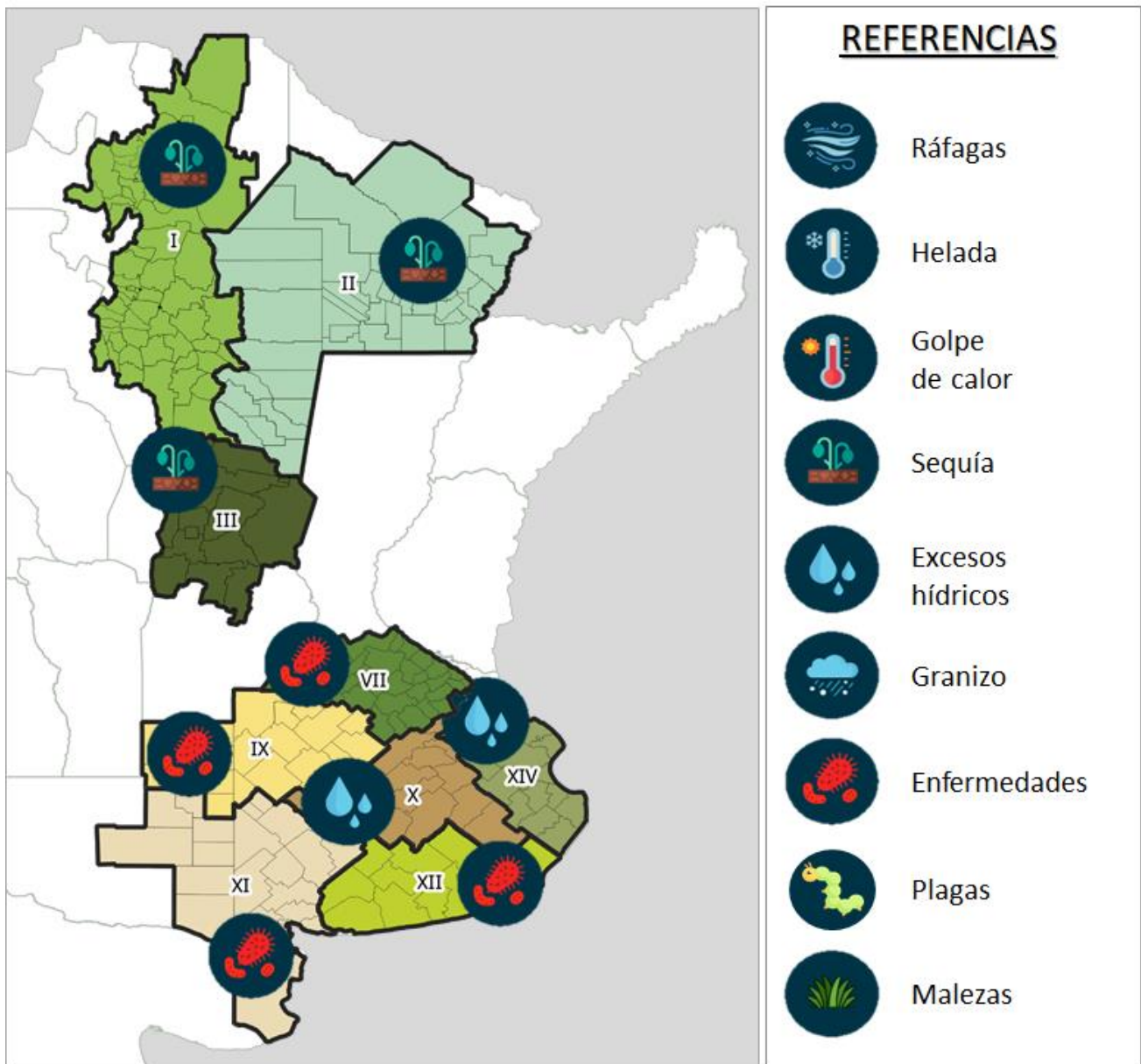


I - NWA (North-West Argentina)
II - NEA (North-East Argentina)
III - North-Central Córdoba
IV - South Córdoba
V - North-Central Santa Fe
VI - North Belt
VII - South Belt
VIII - East-Central Entre Ríos

IX - North La Pampa - West Buenos Aires
X - Central Buenos Aires
XI - South-West de Buenos Aires - South La Pampa
XII - South-East Buenos Aires
XIII - San Luis
XIV - Cuenca del Salado
XV - Others

We appreciate the contribution of our Network of Collaborators throughout the country.

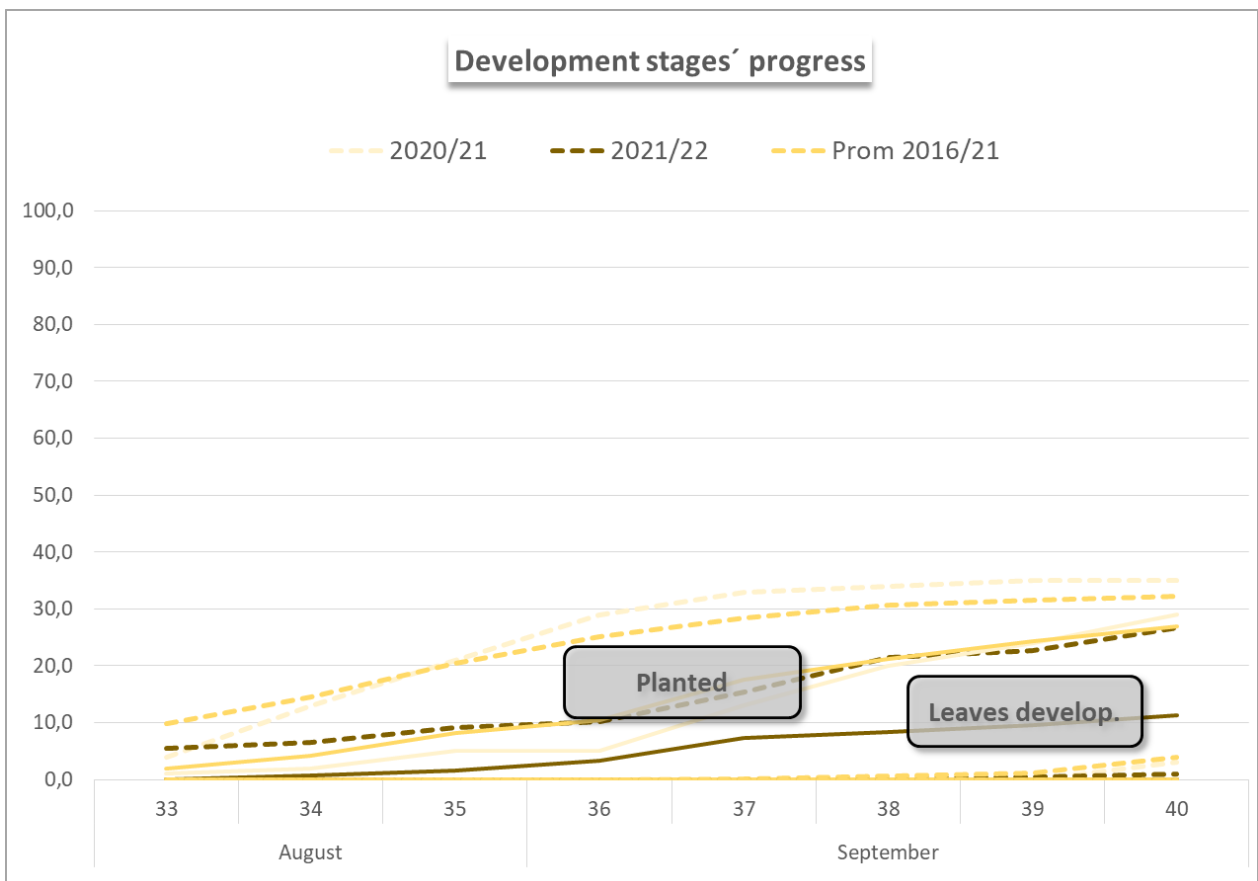
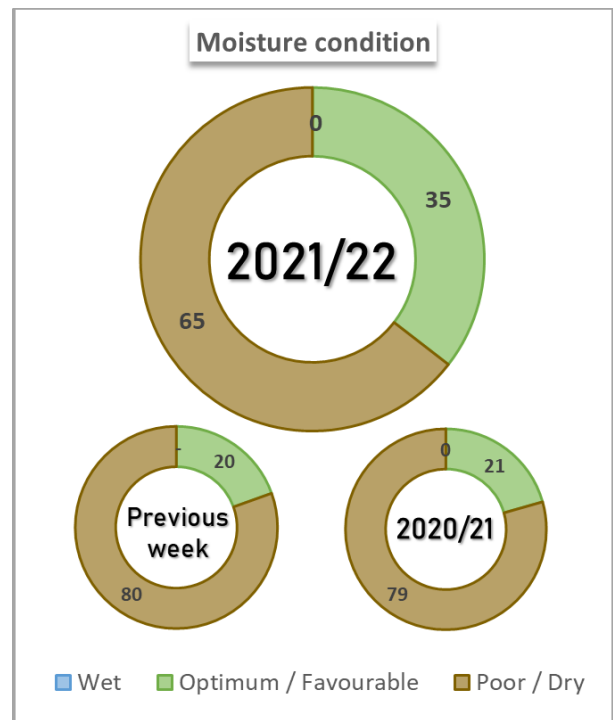
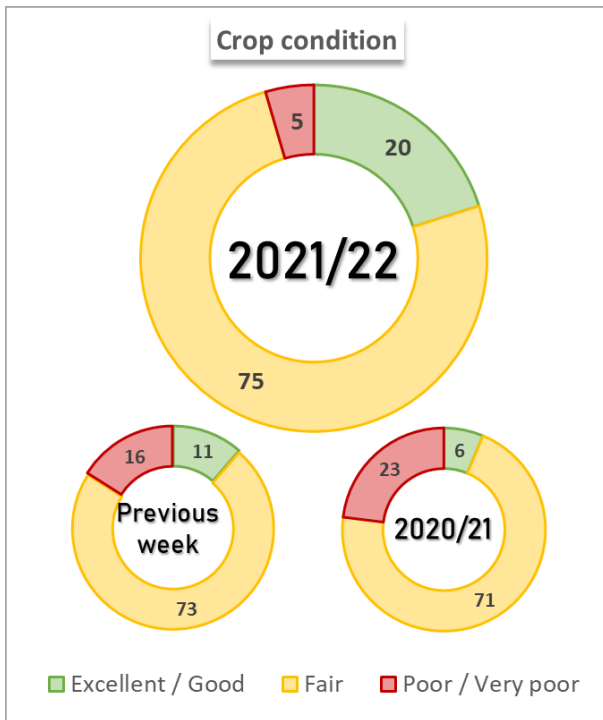
RECENT ADVERSE EVENTS



METHODOLOGY

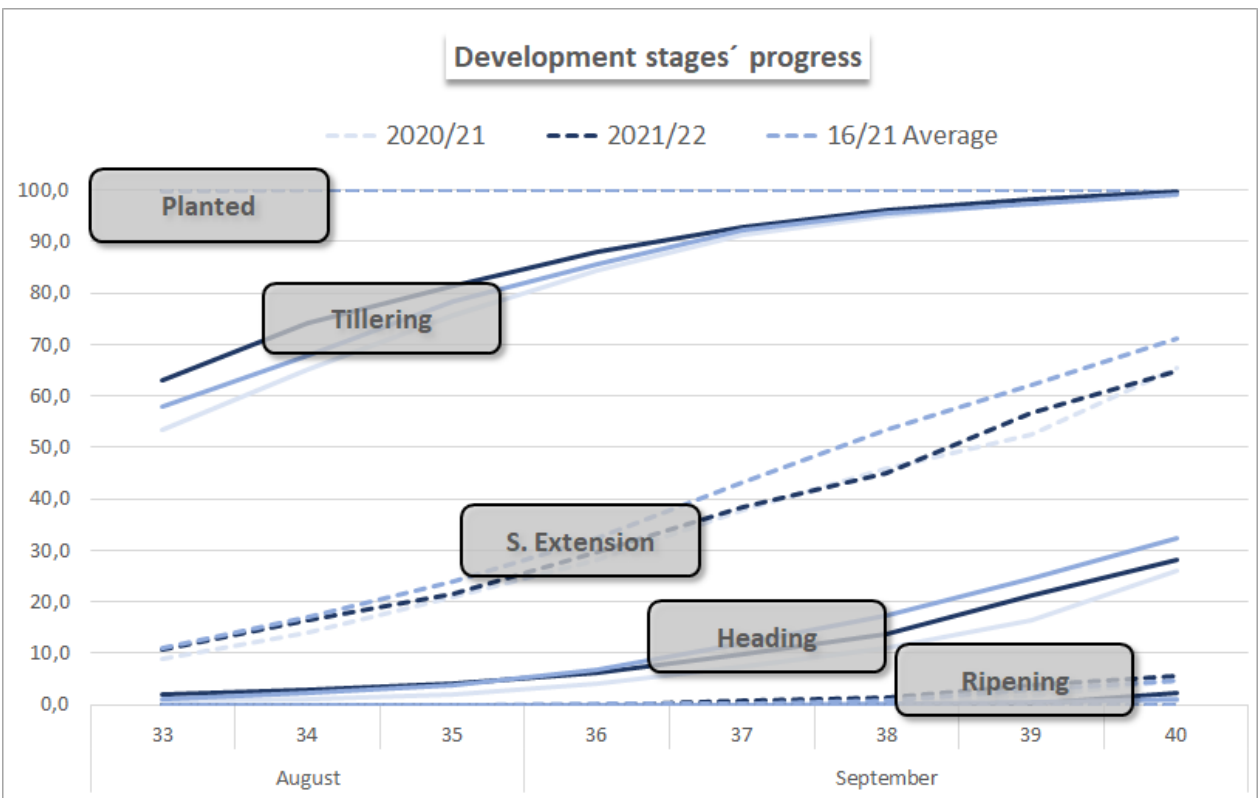
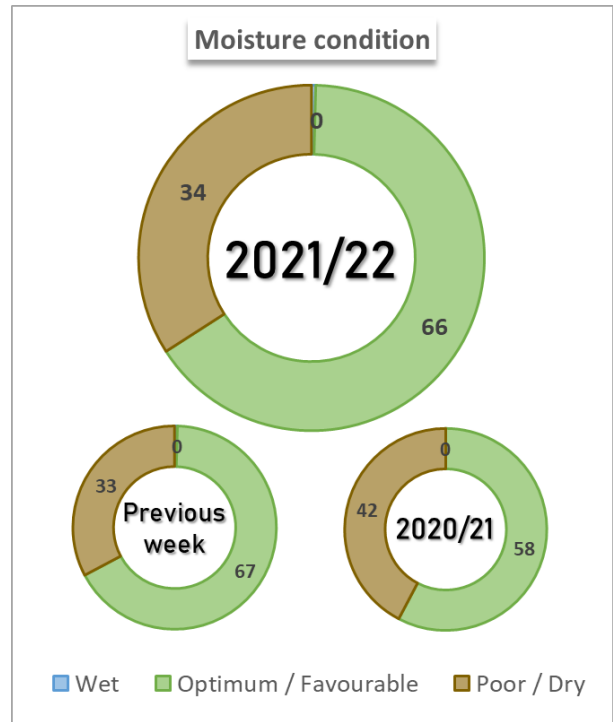
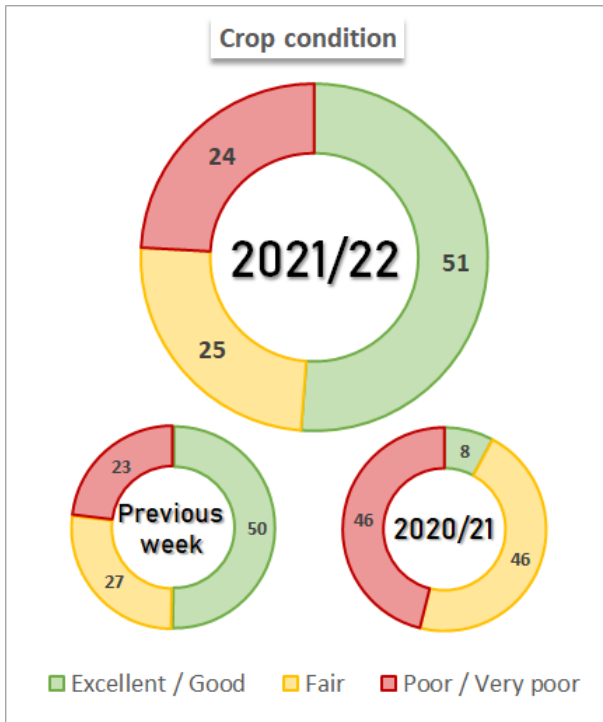
Findings of the survey conducted through September 29, 2021. The areas under analysis in this report account for 90% of the crops planted area. The regional development data is published once planting is complete. The national planting and harvest progress, as well as the phenological data of the crops derive from the final area projection, while the moisture and crop condition derive from the planting progress to

SUNFLOWER 2021/22



Regional participation in the total national area (%)															
Regions	XII	XI	II	V	IX	XIV	X	IV	XIII	VI	VII	VIII	XV	III	I
Nat. Part. 2019/20	23,0	21,6	10,6	14,2	12,4	7,3	4,5	1,7	1,4	0,9	0,8	0,7	0,5	0,4	0,0
Hist. Nat. Part.	23,3	22,3	17,5	14,1	7,7	6,1	3,9	1,3	1,4	0,7	0,5	0,4	0,5	0,3	0,0
Moisture condition, Crop condition & Development stages														Week 40	
Regions	Adverse event	Season	Moisture Condition Favourable / Optimum	Crop Condition Fair / Excellent	Planted	Leaves Development	Flowerbud Stage	Flowering stage	Seed development	Mature	Harvested				
II - NEA	Drought	21/22	20,0	98,0	100,0	78,0	13,0	-	-	-	-	-	-	-	-
		20/21	-	50,0	100,0	83,0	14,0	-	-	-	-	-	-	-	-
		16/21 Average	-	-	100,0	95,4	19,8	-	-	-	-	-	-	-	-
V - NC S Fe		21/22	37,0	93,0	90,0	65,0	-	-	-	-	-	-	-	-	-
		20/21	25,0	86,0	100,0	60,0	2,0	-	-	-	-	-	-	-	
		16/21 Average	-	-	100,0	76,6	0,4	-	-	-	-	-	-	-	
IX - N LP - W BA		21/22	70,0	-	1,3	-	-	-	-	-	-	-	-	-	
		20/21	-	-	-	-	-	-	-	-	-	-	-	-	
		16/21 Average	-	-	0,6	-	-	-	-	-	-	-	-	-	
X - Central BA		21/22	100,0	-	8,0	-	-	-	-	-	-	-	-	-	
		20/21	100,0	100,0	1,0	-	-	-	-	-	-	-	-	-	
		16/21 Average	-	-	0,8	-	-	-	-	-	-	-	-	-	
XI - SW BA - S LP		21/22	-	-	-	-	-	-	-	-	-	-	-	-	
		20/21	-	-	-	-	-	-	-	-	-	-	-	-	
		16/21 Average	-	-	-	-	-	-	-	-	-	-	-	-	
XII - SE BA		21/22	-	-	-	-	-	-	-	-	-	-	-	-	
		20/21	-	-	-	-	-	-	-	-	-	-	-	-	
		16/21 Average	-	-	-	-	-	-	-	-	-	-	-	-	
XIV - Cuenca Sal.		21/22	97,0	-	3,0	-	-	-	-	-	-	-	-	-	
		20/21	-	-	-	-	-	-	-	-	-	-	-	-	
		16/21 Average	-	-	-	-	-	-	-	-	-	-	-	-	
National		21/22	35,5	90,9	26,6	11,4	0,9	-	-	-	-	-	-		
		20/21	20,6	76,9	18,0	11,0	1,0	-	-	-	-	-	-		
		16/21 Average	-	-	32,2	27,0	4,0	-	-	-	-	-	-		

WHEAT 2021/22



Regional participation in the total national area (%)															
Regions	VI	III	XII	VII	XI	IX	V	IV	I	II	X	VIII	XIV	XV	XIII
Nat. Part. 2021/22	12,9	10,0	9,9	9,8	8,8	8,0	7,4	6,8	6,6	6,6	5,5	5,1	2,1	0,4	0,2
Hist. Nat. Part.	13,5	10,5	9,8	9,8	8,8	8,3	7,2	6,7	6,2	6,7	5,5	4,8	1,8	0,3	0,2
Moisture condition, Crop condition & Development stages													Week 40		
Regions	Adverse event	Season	Moisture Condition Favourable / Optimum	Crop Condition Fair / Excellent	Planted	Tillering	Steam Extension	Heading	Ripening	Mature	Harvested				
I - NWA	Drought	21/22	-	-	100,0	100,0	100,0	100,0	54,0	22,0	-				
		20/21	-	-	100,0	100,0	100,0	100,0	45,0	16,0	-				
		16/21 Average	-	-	100,0	100,0	100,0	97,4	44,6	16,0	-				
II - NEA	Drought	21/22	5,0	-	100,0	100,0	100,0	86,0	37,0	18,0	-				
		20/21	-	-	100,0	100,0	100,0	68,0	29,0	-	-				
		16/21 Average	-	-	100,0	100,0	100,0	81,6	25,6	3,2	-				
III - NC Cba	Drought	21/22	-	11,0	100,0	100,0	81,0	41,0	-	-	-				
		20/21	-	-	100,0	100,0	84,0	40,0	-	-	-				
		16/21 Average	-	-	100,0	100,0	93,4	42,6	-	-	-				
IV - S Cba		21/22	30,0	64,0	100,0	100,0	94,0	30,0	-	-	-				
		20/21	15,0	15,0	100,0	100,0	72,0	23,0	-	-	-				
		16/21 Average	-	-	100,0	100,0	82,4	26,8	-	-	-				
V - NC S Fe		21/22	55,0	60,0	100,0	100,0	88,0	42,0	1,0	-	-				
		20/21	24,0	54,0	100,0	100,0	91,0	46,0	-	-	-				
		16/21 Average	-	-	100,0	100,0	95,8	56,6	3,6	-	-				
VI - North Belt		21/22	77,0	100,0	100,0	100,0	70,0	30,0	-	-	-				
		20/21	20,0	36,0	100,0	100,0	72,0	22,0	-	-	-				
		16/21 Average	-	-	100,0	100,0	86,0	36,8	-	-	-				
VII - South Belt		21/22	90,0	100,0	100,0	100,0	62,0	22,0	-	-	-				
		20/21	100,0	43,0	100,0	100,0	67,0	20,0	-	-	-				
		16/21 Average	-	-	100,0	100,0	74,0	23,8	-	-	-				
IX - N LP - W BA	Diseases	21/22	93,0	100,0	100,0	100,0	51,0	14,0	-	-	-				
		20/21	100,0	87,0	100,0	100,0	43,0	3,0	-	-	-				
		16/21 Average	-	-	100,0	100,0	55,8	9,0	-	-	-				
X - Central BA	Floods - Diseases	21/22	95,0	100,0	100,0	100,0	53,0	-	-	-	-				
		20/21	100,0	95,0	100,0	100,0	51,0	2,0	-	-	-				
		16/21 Average	-	-	100,0	100,0	45,2	5,0	-	-	-				
XI - SW BA - S LP	Diseases	21/22	91,0	100,0	100,0	96,0	31,0	-	-	-	-				
		20/21	100,0	93,0	100,0	100,0	32,0	-	-	-	-				
		16/21 Average	-	-	100,0	95,4	30,4	0,8	-	-	-				
XII - SE BA	Diseases	21/22	100,0	100,0	100,0	100,0	28,0	-	-	-	-				
		20/21	95,0	91,0	100,0	100,0	27,0	-	-	-	-				
		16/21 Average	-	-	100,0	94,4	29,4	3,2	-	-	-				
National		21/22	65,5	75,0	100,0	99,6	64,9	28,2	5,6	2,4	-				
		20/21	57,7	53,9	100,0	100,0	63,9	24,7	4,4	1,0	-				
		16/21 Average	-	-	100,0	99,0	71,2	32,4	4,6	1,2	-				